

RANGE COMPOSITION

EVO700: range comprised of over 100 models designed to guarantee the highest level of performance, reliability, energy saving, safety standards and ergonomic operation. These concepts are reflected throughout the line in its modularity, construction and numerous configurations. Thanks to its advance technology and premium performance, the EVO700 is a perfect solution for institutions with a limited footprint as well as restaurants needing to obtain the most from the kitchen space. The models detailed in this sheet are boiling pans with indirect (jacketed) or direct heating.



372087

EVO700

BOILING PANS **ZANUSSI** PROFESSIONAL

FUNCTIONAL AND CONSTRUCTION FEATURES

- ◆ The kettle is suitable to cook, sauté or poach all kinds of produce.
- ◆ Burners in stainless steel with optimized combustion, flame failure device, temperature limiter and protected pilot light in gas models.
- ◆ Heating elements with energy control and temperature limiter in the electric model.
- ◆ Well and lid in stainless steel. Front panels in stainless steel with Scotch Brite finish.
- ◆ The deep-drawn stainless steel well features rounded corners and has a seamless weld joining the bottom plate from the rest of the well for fast, safe and easy cleaning.
- ◆ Pressed well in stainless steel thus guaranteeing high resistance to the corrosive action of salt and water.
- ◆ Feet in stainless steel adjustable in height 50mm.
- ◆ Pressure switch control on indirect

heating models reduces energy and water consumption.

- ◆ Safety valve guaranteeing a working pressure in accordance with regulations.

TECHNICAL DATA					
CHARACTERISTICS	MODELS				
	Z7BSGHDNF0 372089	Z7BSGHINF0 372087	Z7BSGHINFR 372088	Z7BSEHINF0 372094	Z7BSEHINFR 372095
Power supply	Gas	Gas	Gas	Electric	Electric
Pressure switch		●	●	●	●
Water supply					
pressure min. , max. - bar	0.3	0.3	0.3	0.3	0.3
External dimensions - mm					
width	800	800	800	800	800
depth	700	700	700	700	700
height	850	850	850	850	850
height adjustment	50	50	50	50	50
Net vessel useful capacity - Lt.	60	60	60	60	60
Temperature limiter	●	●	●	●	●
Vessel dimensions - mm					
diameter	420	420	420	420	420
Heating type	Direct	Indirect	Indirect	Indirect	Indirect
Power - kW					
gas	14	14	14		
Power - kW					
installed-electric	0.2	0.2	0.2	9.4	9.4
Net weight - kg.	95	100	100	100	100
Supply voltage	230 V, 1N, 50/60	230 V, 1N, 50/60	230 V, 1N, 50/60	400 V, 3N, 50/60	400 V, 3N, 50/60

◆ On Indirect models, the produce is uniformly heated in the base and side walls of the kettle by an indirect heating system that uses integrally generated saturated steam at a temperature of 110°C in the double-jacket.

◆ Discharge tube and tap are very easy to clean from outside.

◆ The depth of the well facilitates stirring and gentle food handling.

◆ Large capacity drain tap enables precise portioning of the discharged food, especially small quantities.

◆ No overshooting of cooking temperatures and fast reaction time to power setting.

◆ External valve allows to manually evacuate excess air accumulated in the jacket during heating phase.

◆ Hot and cold water filling through a solenoid valve.

◆ The special design of the control knobs and bezels guarantees against water infiltration.

◆ All models have right-angled side

edges to allow flush-fitting joins between units.

◆ IPX4 water protection.

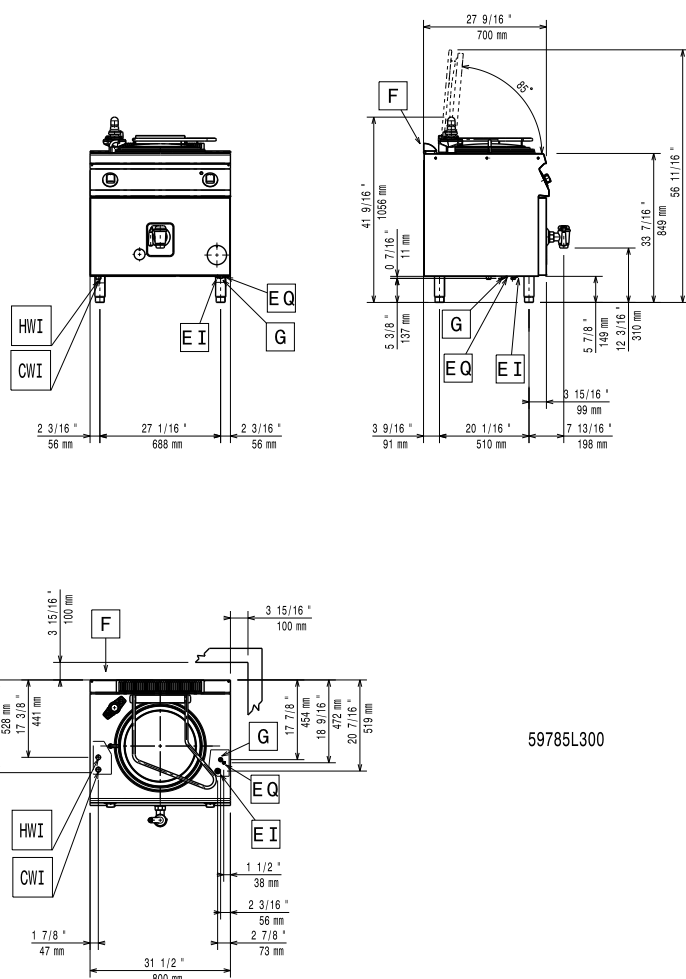
◆ Main connections can be via the rear or the base of the unit.

◆ All gas appliances are supplied for use with natural gas or LPG. Conversion jets supplied as standard.

OPTIONAL ACCESSORIES					
ACCESSORIES	MODELS				
	Z7BSGHDNF0 372089	Z7BSGHINF0 372087	Z7BSGHINFR 372088	Z7BSEHINF0 372094	Z7BSEHINFR 372095
1-SECTION NOODLE BASKET FOR 60 LT PANS	921626	921626	921626	921626	921626
2 SIDE COVERING PANELS H=700-D=700-Z/OEM	206319	206319	206319	206319	206319
2 SIDE KICKING STRIPS - 700 LINE	206249	206249	206249	206249	206249
2 SIDE KICKING STRIPS-CONCRETE INST-700	206265	206265	206265	206265	206265
4 FEET FOR CONCRETE INSTALLATION	206210	206210	206210	206210	206210
4 WHEELS (2 WITH BRAKE)	206188	206188	206188	206188	206188
CHIMNEY UPSTAND 800MM	206304	206304		206304	
DRAUGHT DIVERTER WITH 150 MM DIAMETER	206132	206132	206132		
FLANGED FEET KIT	206136	206136	206136	206136	206136
FLUE CONDENSER FOR 1 MODULE DIAM.150MM	206246	206246	206246		
FRONT.KICK.STRIP F.CONCRETE INST.1000 MM	206150	206150	206150	206150	206150
FRONT.KICK.STRIP F.CONCRETE INST.1200 MM	206151	206151	206151	206151	206151
FRONT.KICK.STRIP F.CONCRETE INST.1600 MM	206152	206152	206152	206152	206152
FRONT.KICK.STRIP F.CONCRETE INST.200 MM	206146	206146	206146	206146	206146
FRONT.KICK.STRIP F.CONCRETE INST.400 MM	206147	206147	206147	206147	206147
FRONT.KICK.STRIP F.CONCRETE INST.800 MM	206148	206148	206148	206148	206148
FRONTAL KICKING STRIP 1000 MM	206177	206177	206177	206177	206177
FRONTAL KICKING STRIP 1200 MM	206178	206178	206178	206178	206178
FRONTAL KICKING STRIP 1600 MM	206179	206179	206179	206179	206179
FRONTAL KICKING STRIP 200 MM	206174	206174	206174	206174	206174
FRONTAL KICKING STRIP 400 MM	206175	206175	206175	206175	206175
FRONTAL KICKING STRIP 800 MM	206176	206176	206176	206176	206176
MATCHING RING FOR FLUE CONDENSER 150DIAM	206133	206133	206133		
PRESSURE REGULATOR FOR GAS UNITS	927225	927225	927225		



www.zanussiprofessional.com

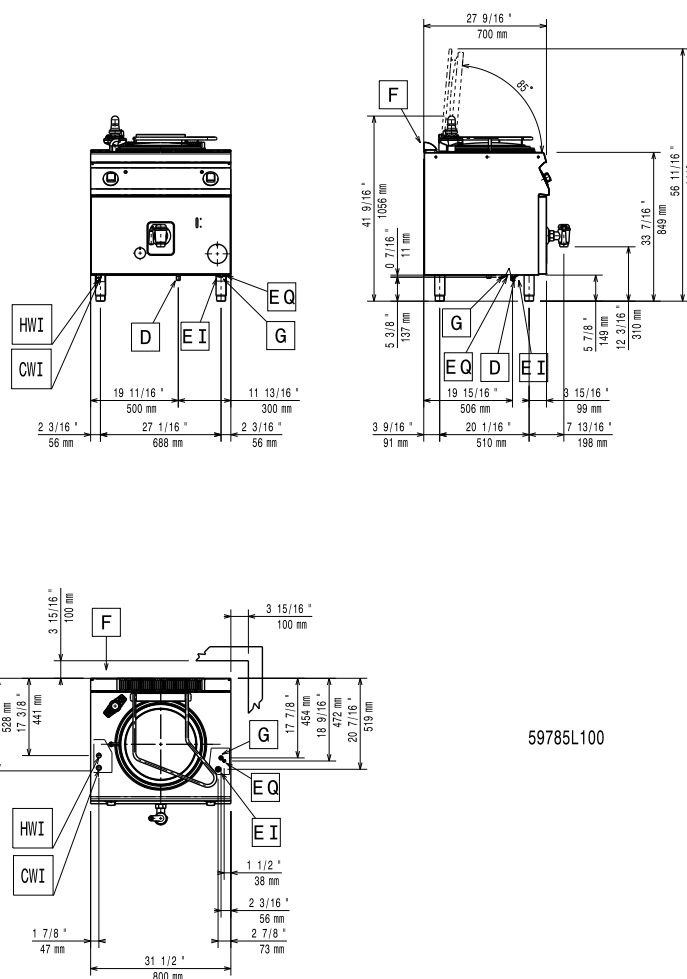


59785L300

LEGEND

	Z7BSGHDNF0 372089
CWI - Cold water inlet	3/4"
D - Water drain	1"1/2
EI - Electrical connection	230 V, 1N, 50/60
G - Gas connection	1/2"
HWI - Hot water inlet	3/4"


www.zanussiprofessional.com



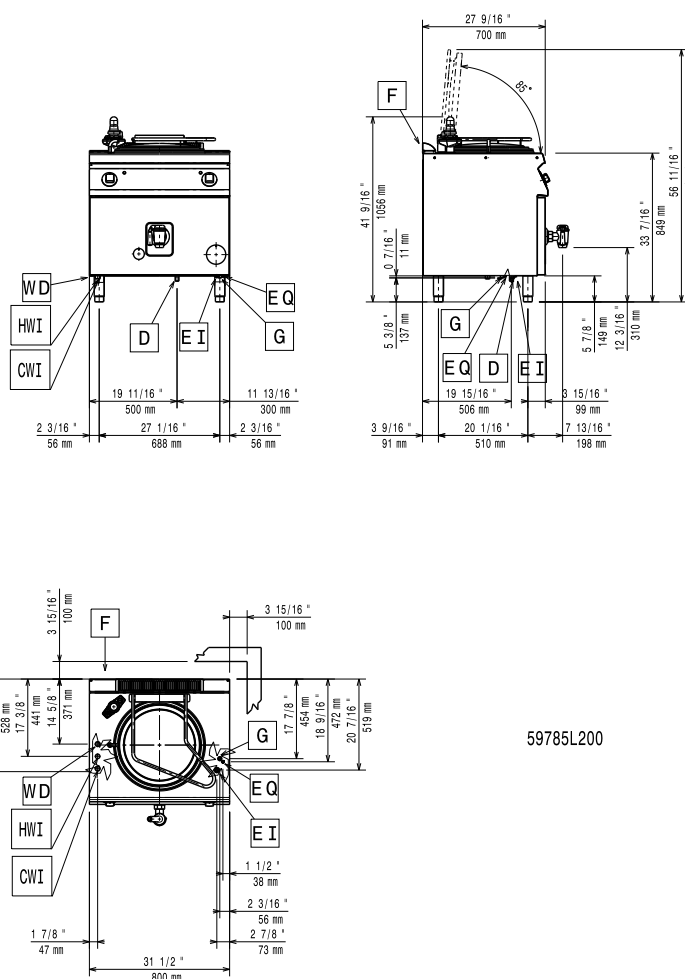
59785L100

LEGEND

	Z7BSGHINF0 372087
CWI - Cold water inlet	3/4"
D - Water drain	1"1/2
EI - Electrical connection	230 V, 1N, 50/60
G - Gas connection	1/2"
HWI - Hot water inlet	3/4"

ZANUSSI
 PROFESSIONAL

www.zanussiprofessional.com



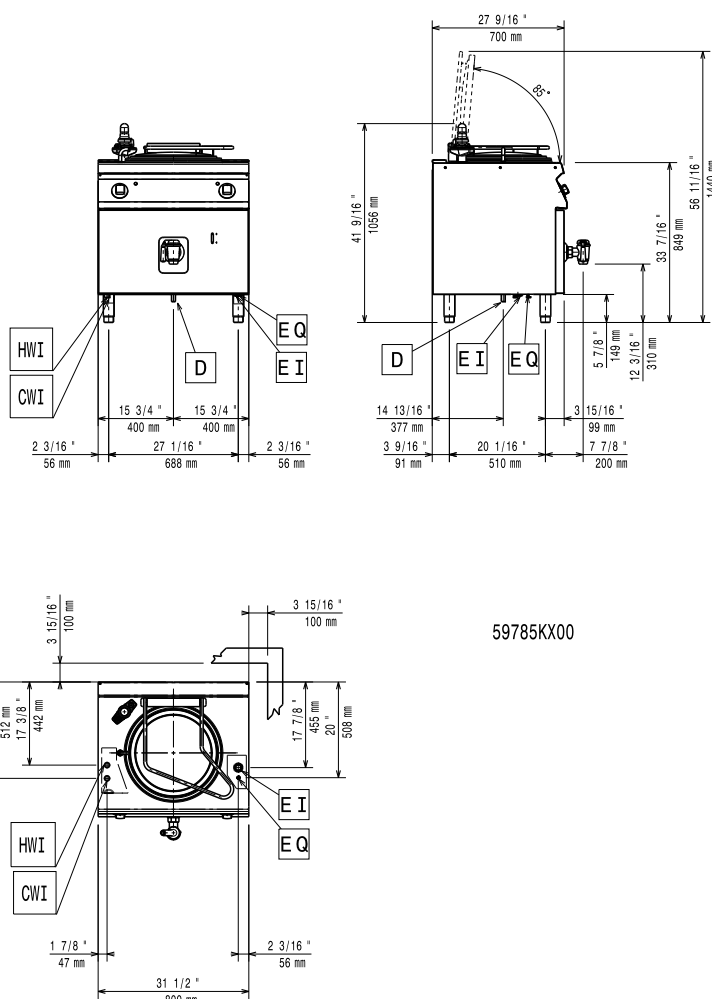
59785L200

LEGEND

	Z7BSGHINFR 372088
CWI - Cold water inlet	3/4"
D - Water drain	1"1/2
EI - Electrical connection	230 V, 1N, 50/60
G - Gas connection	1/2"
HWI - Hot water inlet	3/4"



www.zanussiprofessional.com

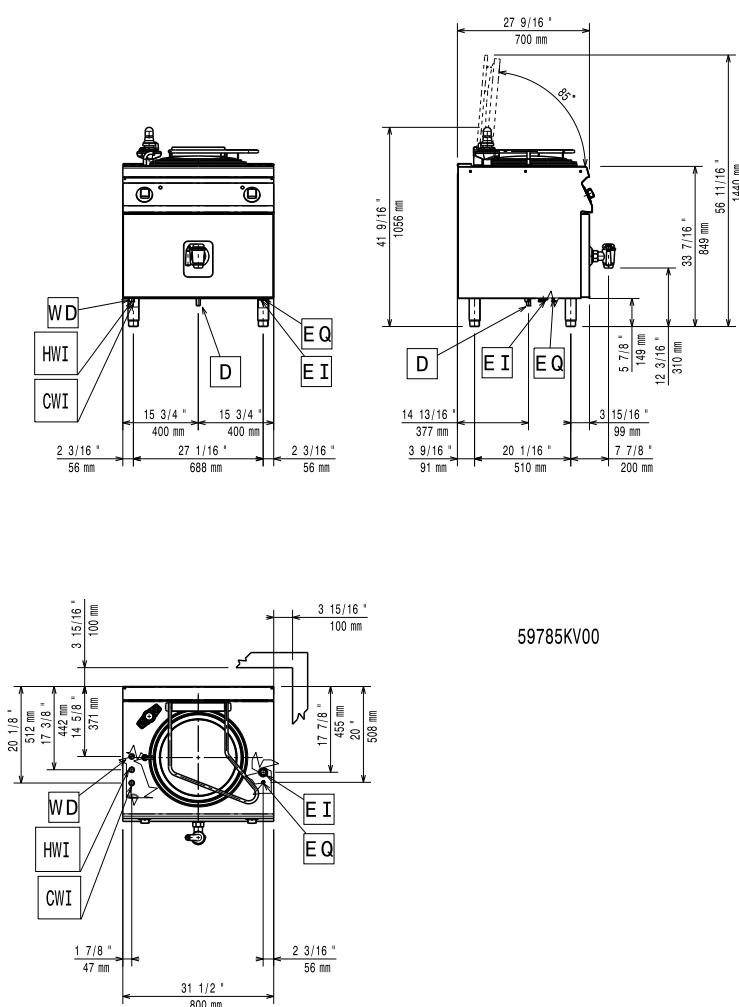


LEGEND

	Z7BSEHINF0 372094
CWI - Cold water inlet	3/4"
D - Water drain	1 1/2"
EI - Electrical connection	400 V, 3N, 50/60
HWI - Hot water inlet	3/4"

ZANUSSI
 PROFESSIONAL

www.zanussiprofessional.com



59785KV00

LEGEND

	Z7BSEHINFR 372095
CWI - Cold water inlet	3/4"
D - Water drain	1 1/2"
EI - Electrical connection	400 V, 3N, 50/60
HWI - Hot water inlet	3/4"



www.zanussiprofessional.com