



**BRAVILOR  
BONAMAT**

- **HW**-series
- **RLX**-series
- **HW 500**-series
- **HM**-series
- **HCM**

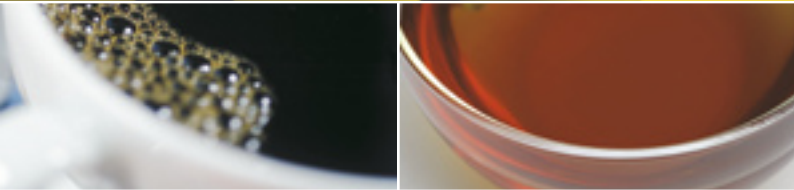
## Hot water and milk heaters

Large quantities quickly at the right temperature

The taste of quality worldwide



*Fresh  
Aroma  
Taste*



Bravilor Bonamat offers a wide range of hot water and milk equipment suitable for any location, perfect for preparing tea, soup or other hot drinks. The HW-series heats large quantities of water quickly at the right temperature, while the HM-series has been developed for heating milk and includes HCM, designed specifically for chocolate milk. This range offers a variety of high quality machines boasting simple operation, a choice of non-drip tap and push button dispense and all incorporating our boil dry safety mechanism.



## ■ HW-series



### **HW 10**

- Water (2 litres) quickly at the right temperature
- Features a manual fill water system allowing the machine to be placed anywhere



### **HWA 20/50**

- Water (3/4.5 litres) quickly at the right temperature
- Automatic water fill model with quick and easy connection to the water mains supply
- The indicator light indicates when the water is at the right temperature



◀ Quick and easy:  
drawing off with the  
handy non-drip tap.



◀ With the RLX 4 steam  
tap in no time other  
beverages at the right  
temperature.



## ■ RLX-series

### HWA 40/70

- Large quantities of water (4/7 litres) quickly at the right temperature
- Automatic water fill model with quick and easy connection to the water mains supply
- Cup or decanter hot water at the press of a button or a variable volume via the free flow key
- Simple programming for temperature and the water volumes (cup/decanter)
- The indicator light indicates when the water is at the right temperature
- Equipped with a descale indicator



### RLX 3

- Water (1.8 litres) quickly at the right temperature
- Automatic water fill model with quick and easy connection to the water mains supply
- Simple programming of water temperature
- Equipped with a descale indicator



### RLX 4

- Machine for hot water and steam
- Water (1.5 litres) quickly at the right temperature
- Automatic water fill model with quick and easy connection to the water mains supply
- Equipped with a descale indicator



◀ HWA 40/70 choice of cup, decanter or a variable amount with the free-flow key.



◀ RLX 3/4 also available as an integrated module within the RLX coffee range.



## ■ HW 500-series



### **HW** 505/510/520

- Large quantities of water (4/8/16 litres) quickly at the right temperature
- Features a manual fill water system allowing the machine to be placed anywhere
- The required temperature can be regulated by means of a thermostat
- The indicator light indicates when the water is at the right temperature
- Gauge glass provides a visible water level



### **HW+** 510/520

- Large quantities of water (8/16 litres) quickly at the right temperature
- Machines with quick and easy connection to the water mains supply and filled with water at the press of a button
- The required temperature can be regulated by means of a thermostat
- The indicator light indicates when the water is at the right temperature
- Gauge glass provides a visible water level



◀ A quick tapping tube can be used for filling cups and decanters (for HW(+) series only).



◀ Water temperature can be regulated by means of a thermostat. The indicator light indicates when the contents is at the right temperature.



## ■ HM-series



### HM 505/510/520

- Large quantities of milk (5/10/20 litres) quickly at the right temperature
- Heats the milk using the bain-marie method, preventing burning or sticking
- The required temperature can be regulated by means of a thermostat
- Gauge glass provides a visible water level in the bain-marie system

## ■ HCM



### HCM 510

- Large quantities of chocolate milk (10 litres) quickly at the right temperature
- Heats the chocolate milk according to the bain-marie method, preventing burning or sticking
- The required temperature can be regulated by means of a thermostat
- Gauge glass provides a visible water level in the bain-marie system



◀ The cup heater WHK preheats cups and mugs, ensuring the beverage stays warm longer after serving.



◀ The stainless steel vacuum flasks keeps your beverage hot or cold for long periods.

**HW-series**

	<b>HW 10</b>	<b>HWA 20</b>	<b>HWA 40</b>	<b>HWA 50</b>	<b>HWA 70</b>
Holding capacity	2 litres	3 litres	4 litres	4,5 litres	7 litres
Throughput per hour 230V	approx. 18 litres	approx. 18 litres	approx. 31 litres	-	approx. 31 litres
Throughput per hour 400V	-	-	-	approx. 42 litres	approx. 53 litres
Rated power 230V~ 50/60Hz	2080W	2110W	3350W	-	3350W
Rated power 400V~ 3N 50/60Hz	-	-	-	4380W	6000W
Dimensions (bxdxh)	205x355x430 mm	205x355x430 mm	218x459x532 mm	295x525x582 mm	218x460x602 mm

**HW 500-series**

	<b>HW 505</b>	<b>HW 510</b>	<b>HW 520</b>	<b>HW+ 510</b>	<b>HW+ 520</b>
Holding capacity	4 litres	8 litres	16 litres	8 litres	16 litres
Throughput per hour	approx. 20 litres	approx. 30 litres	approx. 30 litres	approx. 30 litres	approx. 30 litres
Rated power 230V~ 50/60Hz	1990W	2850W	2850W	2850W	2850W
Dimensions (øxh)	205x452 mm	282x502 mm	369x520 mm	282x502 mm	369x520 mm

**RLX-series**

	<b>RLX 3</b>	<b>RLX 4</b>
Holding capacity	1,8 litres	1,5 litres
Throughput per hour	approx. 18 litres	approx. 25 litres
Rated power 230V~ 50/60Hz	1910W	2880W
Dimensions (bxdxh)	245x509x448 mm	245x509x448 mm

**H(C)M-series**

	<b>HM 505</b>	<b>HM 510</b>	<b>HM 520</b>	<b>HCM 510</b>
Holding capacity	5 litres	10 litres	20 litres	10 litres
Heating time	approx. 20 minutes	approx. 25 minutes	approx. 55 minutes	approx. 25 minutes
Rated power 230V ~ 50/60Hz	2090W	2850W	2850W	2850W
Dimensions (øxh)	210x423 mm	290x438 mm	377x458 mm	290x438 mm

**Options HW/RLX/H(C)M-series**

- Quick tapping tube
- Cabinet

**We advise the use of:**

- Renegite for descaling
- Cleaner for thorough cleaning

Your Bravilor Bonamat dealer



[www.bravilor.com](http://www.bravilor.com)