

Model: **TA21/1B**Code: **T144020004****Exterior/interior finishing:**

- Stainless steel AISI 304 18/10
- Back in Stainless steel AISI 304

Insulation:

- 60 mm thickness - CFC/HCFC free

Cover evaporator:

- Removable in stainless steel AISI 304 Cr-Ni 18/10

Internal racks and slides:

- Stainless steel AISI 304 18/10

Inner corners:

- Rounded cornes ensuring maximum hygiene

Feet:

- Stainless steel AISI 304 adjustable 100-150 mm

Door:

- Self-closing, reversible with 105° dwell

Door handle:

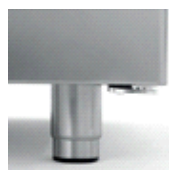
- Stainless steel AISI 304

Door gasket:

- Magnetic, easy to replace



Constructional data



• Dimensions	2260×700×950 mm
• Packing dimensions	2280×735×990 mm
• Net weight	210 Kg
• Body height	710 mm
• Temperature range	-15°-20°C
• Cooling capacity	935 W*
• Standard connection	230 V - 50 Hz
• Total rate	1098 W - 6,1 A
• Cooling gas	R404a
• Standard equipment	N. 4 plastic coated shelves GN1/1 - 325×530 mm
• *Evap. -23,3°C cond. 54,4°C	

Features



Plastic coated shelf GN 325×530 mm
Code O221325530



Pair of slides type C - 505 mm
Code O121150520



Kit of 6 swivel and brake castors in stainless
steel AISI 304
Code O446000020



Refrigerated drawer 1/2 for counter Master
GN1/1
Code D623012020



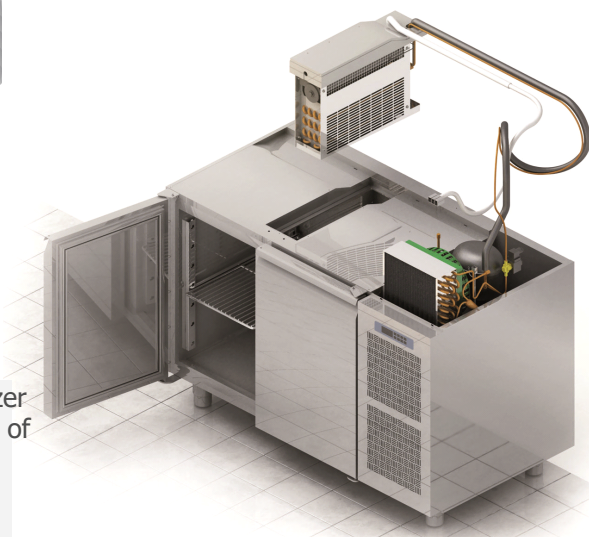
Refrigerated drawer 1/3 for counter Master
GN1/1
Code D623013020



Refrigerated drawer 1/3+2/3 for counter
Master GN1/1
Code D623023020

Accessories

Coldline made major investments in design research, becoming a leader in technology and innovation. Each cabinet marked with the FSSsymbol is equipped with a refrigeration system independent of the structure, which provides improved flexibility and service.



FSS • FAST SERVICE SYSTEM

- You can change the intended use of an appliance, a freezer into a chiller - and the other way around - even after years of installation.
- You can extend the life of a refrigeration cabinet by replacing its old refrigeration system with a new one.
- Maintenance and service are simple, quick and do not require specialised personnel.

NO-COMPROMISE QUALITY STEEL

AISI 304

AISI 304 18/10 is a high quality steel. Its stability guarantees good-looking and durable products, ensuring maximum hygiene and corrosion resistance over time.

60 mm

INSULATION THICKNESS

The 60 mm thick insulation ensures lower heat loss, reduced work of the compressor, therefore lower energy consumption.

INTELLIGENT DEFROST



Intelligent defrost changes according to the actual presence of frost. The system runs for the minimum time required.



EVAPORATION SYSTEM

The automatic evaporation of condensing water is activated only in the presence of water produced as a result of a defrost cycle.

CONSTANT TEMPERATURE



The fans stop when the door is opened to reduce temperature changes and consequently reduce the work of the compressor.

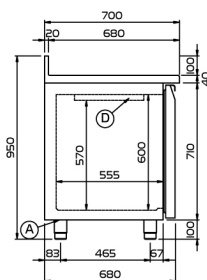
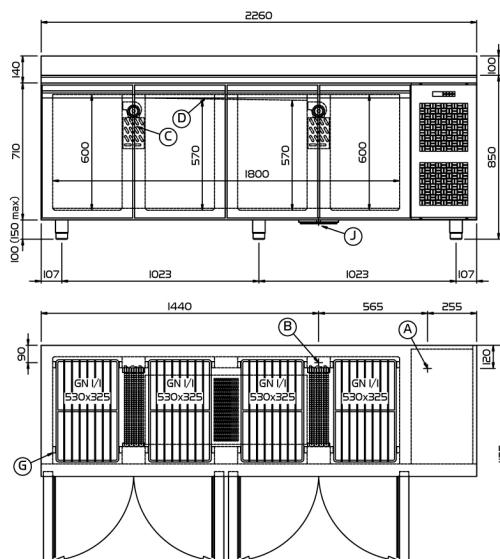


ASPERA COMPRESSORS

Aspera compressors reduce energy consumption by 15% and acoustic impact by 5 dBA.

FSS • Fast Service System

Focus



(A) POWER SUPPLY CABLE OUTLET

(B) CONDENSATION WATER DRAIN

(C) 2nd EVAPORATOR (*ONLY FREEZER VERSION)

(G) RACKS PITCH




(J) WASTE HEAT RECOVERY VAPORIZER

(D) AIR FLOW CONVEYOR

Technical drawing


• Trade mark:	Coldline
• Model:	TA21/1B
• Design:	Counter
• Energy efficiency class :	F
• Energy efficiency index :	87,4
• Net volume positive/negative:	- 372
• Climate class:	4 (30°C-55% r.h.)
• Energy consumption over 24 hours (E24h):	10,90
• Annual energy consumption in kWh:	3979
• Cooling gas:	R404a




ENERG

Y IJA
IE IA

energia · ενεργεια


TA21/1B


A
B
C
D
E
F
G




F

ENERGIA · ЕНЕРГИЯ · ΕΝΕΡΓΕΙΑ
ENERGIJA · ENERGY · ENERGIE
ENERGI


3979
kWh/annum



- L



372 L



4
30°C-55%

2015/1094-I

Energy label (UE 2015/1094)