

Model: **A70/2MB**

Code: **A140702602**

**Exterior/interior finishing:**

- Stainless steel AISI 304 18/10
- Back in galvanised steel

**Insulation:**

- 75 mm thickness - CFC/HCFC free

**Cover evaporator:**

- Removable in stainless steel AISI 304 Cr-Ni 18/10

**Internal racks and slides:**

- Stainless steel AISI 304 18/10

**Inner corners:**

- Rounded cornes ensuring maximum hygiene

**Feet:**

- Stainless steel AISI 304 adjustable 100-150 mm

**Door:**

- Self-closing, reversible with 105° dwell

**Door handle:**

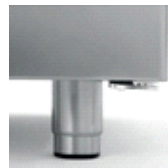
- Stainless steel AISI 304 Cr-Ni 18/10

**Door gasket:**

- Magnetic, easy to replace

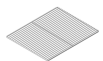


Constructional data



• Dimensions	740×815×2085 mm
• Packing dimensions	760×850×2250 mm
• Net weight	165 Kg
• Gross capacity	700 lt
• Temperature range	-2°+8°C/-18°-22°C
• Cooling capacity	368 W* + 464 W**
• Standard connection	230 V - 50 Hz
• Total rate	825 W - 4,7 A
• Cooling gas	R404a
• Standard equipment	N. 4 plastic coated shelves - GN2/1
	Key lock
	Lighting
• *Evap. -10°C cond. 54,4°C	**Evap. -23,3°C cond. 54,4°C

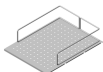
Features



Plastic coated shelf GN 650×530 mm  
Code O221650530



Pair of slides type C - 605 mm  
Code O121160520



Stainless steel coat for shelf 00 w/supports for bottles  
Code O261650530



Stainless steel drawer for cabinet Master 700-H150 mm  
Code L313007304



Kit of racks for drawers (cabinets)  
Code D615288004



Kit of 4 swivel and brake castors in stainless steel AISI 304  
Code O444000020

Accessories

# Catering

Depth 815 mm

# Cabinet Master Combi 700 lt -2°+8°/-18°-22°C 2 half doors

Coldline made major investments in design research, becoming a leader in technology and innovation. Each cabinet marked with the FSS symbol is equipped with a refrigeration system independent of the structure, which provides improved flexibility and service.



## FSS • FAST SERVICE SYSTEM

- You can change the intended use of an appliance, a freezer into a chiller - and the other way around - even after years of installation.
- You can extend the life of a refrigeration cabinet by replacing its old refrigeration system with a new one.
- Maintenance and service are simple, quick and do not require specialised personnel.

FSS • Fast Service System

### NO-COMPROMISE QUALITY STEEL

**AISI 304**

AISI 304 18/10 is a high quality steel. Its stability guarantees good-looking and durable products, ensuring maximum hygiene and corrosion resistance over time.

**75 mm**

### INSULATION THICKNESS

The 75 mm thick insulation ensures lower heat loss, reduced work of the compressor, therefore lower energy consumption.

### INTELLIGENT DEFROST



Intelligent defrost changes according to the actual presence of frost. The system runs for the minimum time required.



### EVAPORATION SYSTEM

The automatic evaporation of condensing water is activated only in the presence of water produced as a result of a defrost cycle.

### CONSTANT TEMPERATURE



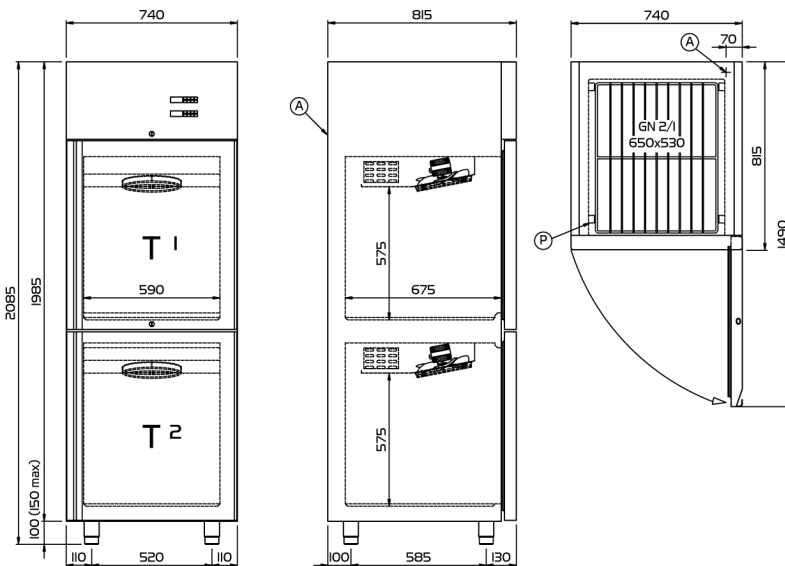
The fans stop when the door is opened to reduce temperature changes and consequently reduce the work of the compressor.



### ASPERA COMPRESSORS

Aspera compressors reduce energy consumption by 15% and acoustic impact by 5 dBA.

Focus



(A) POWER SUPPLY CABLE OUTLET

(P) RACKS PITCH



Technical drawing