

# Catering

Depth 700 mm

## Counter Smart GN 3D -2°+8°C with top+sb

Model: **TA17/1ME**

Code: **T163020002**

### Exterior/interior finishing:

- Stainless steel AISI 304 18/10
- Back in colaminated steel

### Insulation:

- 60 mm thickness - CFC/HCFC free

### Cover evaporator:

- Removable in stainless steel AISI 304 Cr-Ni 18/10

### Internal racks and slides:

- Stainless steel AISI 304 18/10

### Inner corners:

- Rounded cornes ensuring maximum hygiene

### Feet:

- Stainless steel AISI 304 adjustable 100-150 mm

### Door:

- Self-closing, reversible with 105° dwell

### Door handle:

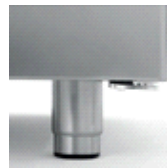
- Integrated in PVC

### Door gasket:

- Magnetic, easy to replace



Constructional data



• Dimensions	1780×700×950 mm
• Packing dimensions	1800×735×990 mm
• Net weight	155 Kg
• Body height	710 mm
• Temperature range	-2°+8°C
• Cooling capacity	565 W*
• Standard connection	230 V - 50 Hz
• Total rate	328 W - 1,8 A
• Cooling gas	R404a
• Standard equipment	N. 3 plastic coated shelves GN1/1 - 325×530 mm
• *Evap. -10°C cond. 54,4°C	

Features



Plastic coated shelf GN 325×530 mm  
Code O221325530



Pair of slides type C - 505 mm  
Code O121150520



Kit of 4 swivel and brake castors in stainless steel AISI 304  
Code O444000020



Refrigerated drawer 1/2 for counter Smart GN1/1  
Code D623012022



Refrigerated drawer 1/3 for counter Smart GN1/1  
Code D623013022



Refrigerated drawer 1/3+2/3 for counter Smart GN1/1  
Code D623023022

Accessories



Cold Line S.r.l. • Via E. Mattei, 38 • 35038 Torreglia • Padova - Italy • [www.coldline.it](http://www.coldline.it) • [info@coldline.it](mailto:info@coldline.it)

In order to constantly offer the best possible products, we reserve the right to make changes on technical specifications without incurring any obligation for equipment previously or subsequently sold.

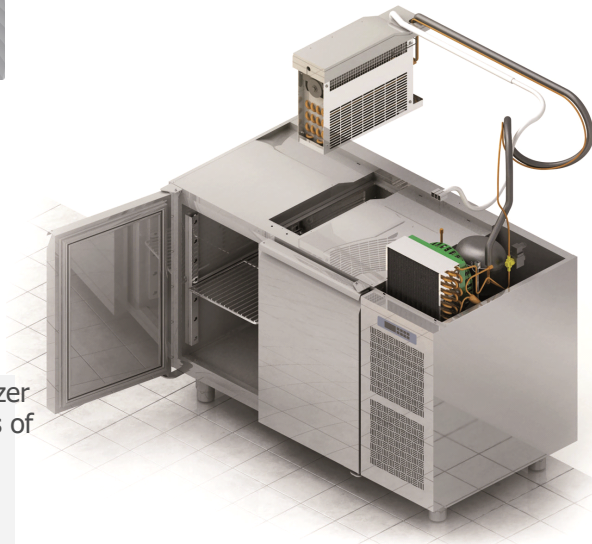


# Catering

Depth 700 mm

# Counter Smart GN 3D -2°+8°C with top+sb

Coldline made major investments in design research, becoming a leader in technology and innovation. Each cabinet marked with the FSSsymbol is equipped with a refrigeration system independent of the structure, which provides improved flexibility and service.



## FSS • FAST SERVICE SYSTEM

- You can change the intended use of an appliance, a freezer into a chiller - and the other way around - even after years of installation.
- You can extend the life of a refrigeration cabinet by replacing its old refrigeration system with a new one.
- Maintenance and service are simple, quick and do not require specialised personnel.

FSS • Fast Service System

### NO-COMPROMISE QUALITY STEEL

**AISI 304**

AISI 304 18/10 is a high quality steel. Its stability guarantees good-looking and durable products, ensuring maximum hygiene and corrosion resistance over time.

**60 mm**

### INSULATION THICKNESS

The 60 mm thick insulation ensures lower heat loss, reduced work of the compressor, therefore lower energy consumption.

### HOT GAS DEFROST



Intelligent defrost changes according to the actual presence of frost. The system runs for the minimum time required.



### EVAPORATION SYSTEM

The automatic evaporation of condensing water is activated only in the presence of water produced as a result of a defrost cycle.

### CONSTANT TEMPERATURE



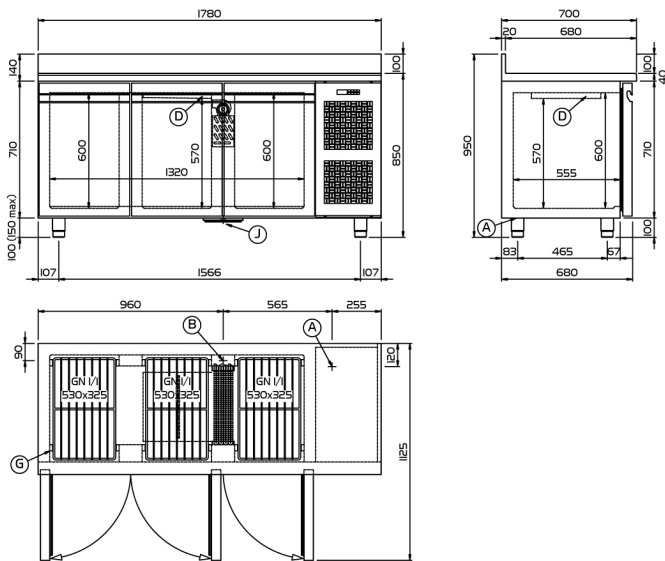
The fans stop when the door is opened to reduce temperature changes and consequently reduce the work of the compressor.



### ASPERA COMPRESSORS

Aspera compressors reduce energy consumption by 15% and acoustic impact by 5 dBA.

Focus



- (A) POWER SUPPLY CABLE OUTLET
- (B) CONDENSATION WATER DRAIN
- (C) RACKS PITCH
- (D) AIR FLOW CONVEYOR
- (E) WASTE HEAT RECOVERY VAPORIZER

Technical drawing




Cold Line S.r.l. • Via E. Mattei, 38 • 35038 Torreglia • Padova - Italy • [www.coldline.it](http://www.coldline.it) • [info@coldline.it](mailto:info@coldline.it)

In order to constantly offer the best possible products, we reserve the right to make changes on technical specifications without incurring any obligation for equipment previously or subsequently sold.



• Trade mark:	Coldline
• Model:	TA17/1ME
• Design:	Counter
• Energy efficiency class :	F
• Energy efficiency index :	87,5
• Net volume positive/negative:	279 -
• Climate class:	4 (30°C-55% r.h.)
• Energy consumption over 24 hours (E24h):	6,00
• Annual energy consumption in kWh:	2190
• Cooling gas:	R404a



# ENERG


енергия · ενεργεια

Y


IJA

IE

IA




## TA17/1ME




ENERGIA · ЕНЕРГИЯ · ΕΝΕΡΓΕΙΑ  
ENERGIJA · ENERGY · ENERGIE  
ENERGI

# 2190


kWh/annum



**279** L



- L



**4**  
30°C-55%

**2015/1094-I**

Energy label (UE 2015/1094)

