

Catering

Depth 700 mm

Model: **TA21/1ME**
Code: **T164020002**

Exterior/interior finishing:

- Stainless steel AISI 304 18/10
- Back in colaminated steel

Insulation:

- 60 mm thickness - CFC/HCFC free

Cover evaporator:

- Removable in stainless steel AISI 304 Cr-Ni 18/10

Internal racks and slides:

- Stainless steel AISI 304 18/10

Inner corners:

- Rounded cornes ensuring maximum hygiene

Feet:

- Stainless steel AISI 304 adjustable 100-150 mm

Door:

- Self-closing, reversible with 105° dwell

Door handle:

- Integrated in PVC

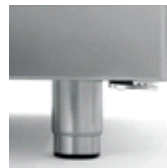
Door gasket:

- Magnetic, easy to replace

Counter Smart GN 4D -2°+8°C with top+sb



Constructional data



• Dimensions	2260×700×950 mm
• Packing dimensions	2280×735×990 mm
• Net weight	195 Kg
• Body height	710 mm
• Temperature range	-2°+8°C
• Cooling capacity	565 W*
• Standard connection	230 V - 50 Hz
• Total rate	328 W - 1,8 A
• Cooling gas	R404a
• Standard equipment	N. 4 plastic coated shelves GN1/1 - 325×530 mm
• *Evap. -10°C cond. 54,4°C	

Features



Plastic coated shelf GN 325×530 mm
Code O221325530



Pair of slides type C - 505 mm
Code O121150520



Kit of 6 swivel and brake castors in stainless steel AISI 304
Code O446000020



Refrigerated drawer 1/2 for counter Smart GN1/1
Code D623012022



Refrigerated drawer 1/3 for counter Smart GN1/1
Code D623013022



Refrigerated drawer 1/3+2/3 for counter Smart GN1/1
Code D623023022

Accessories



Cold Line S.r.l. • Via E. Mattei, 38 • 35038 Torreglia • Padova - Italy • www.coldline.it • info@coldline.it

In order to constantly offer the best possible products, we reserve the right to make changes on technical specifications without incurring any obligation for equipment previously or subsequently sold.

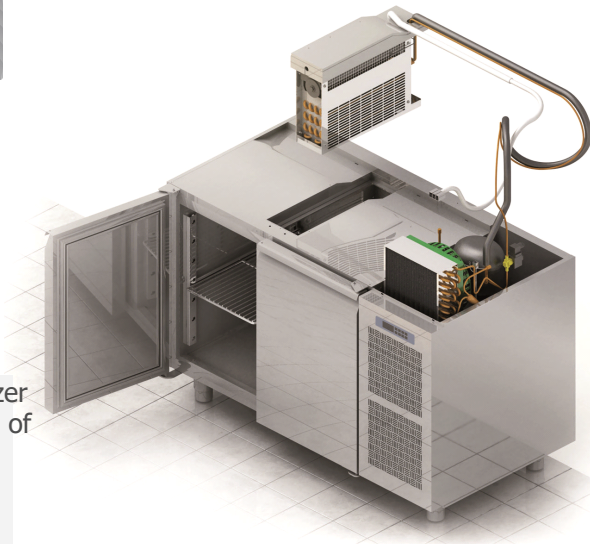


Catering

Depth 700 mm

Counter Smart GN 4D -2°+8°C with top+sb

Coldline made major investments in design research, becoming a leader in technology and innovation. Each cabinet marked with the FSSsymbol is equipped with a refrigeration system independent of the structure, which provides improved flexibility and service.



FSS • FAST SERVICE SYSTEM

- You can change the intended use of an appliance, a freezer into a chiller - and the other way around - even after years of installation.
- You can extend the life of a refrigeration cabinet by replacing its old refrigeration system with a new one.
- Maintenance and service are simple, quick and do not require specialised personnel.

FSS • Fast Service System

NO-COMPROMISE QUALITY STEEL

AISI 304

AISI 304 18/10 is a high quality steel. Its stability guarantees good-looking and durable products, ensuring maximum hygiene and corrosion resistance over time.

60 mm

INSULATION THICKNESS

The 60 mm thick insulation ensures lower heat loss, reduced work of the compressor, therefore lower energy consumption.

HOT GAS DEFROST



Intelligent defrost changes according to the actual presence of frost. The system runs for the minimum time required.



EVAPORATION SYSTEM

The automatic evaporation of condensing water is activated only in the presence of water produced as a result of a defrost cycle.

CONSTANT TEMPERATURE



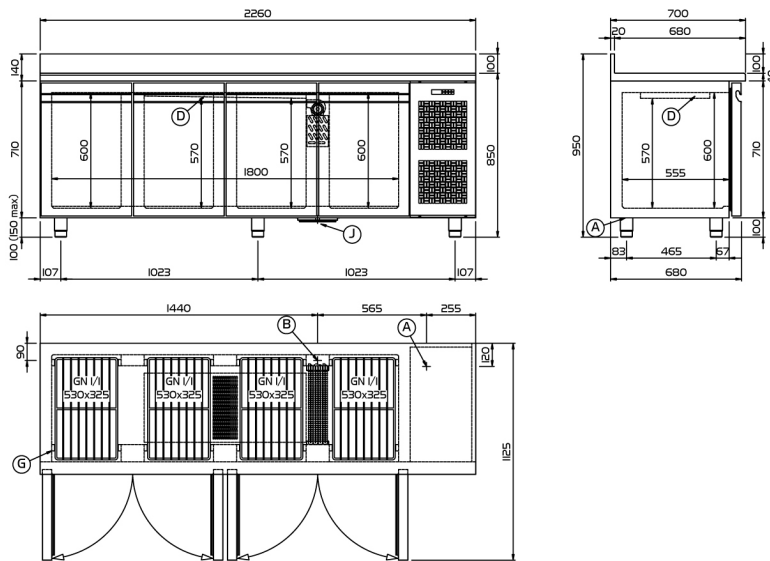
The fans stop when the door is opened to reduce temperature changes and consequently reduce the work of the compressor.



ASPERA COMPRESSORS

Aspera compressors reduce energy consumption by 15% and acoustic impact by 5 dBA.

Focus



- (A) POWER SUPPLY CABLE OUTLET
- (B) CONDENSATION WATER DRAIN
- (C) RACKS PITCH
- (D) AIR FLOW CONVEYOR
- (E) WASTE HEAT RECOVERY VAPORIZER

Technical drawing




Cold Line S.r.l. • Via E. Mattei, 38 • 35038 Torreglia • Padova - Italy • www.coldline.it • info@coldline.it

In order to constantly offer the best possible products, we reserve the right to make changes on technical specifications without incurring any obligation for equipment previously or subsequently sold.



• Trade mark:	Coldline
• Model:	TA21/1ME
• Design:	Counter
• Energy efficiency class :	F
• Energy efficiency index :	86,6
• Net volume positive/negative:	372 -
• Climate class:	4 (30°C-55% r.h.)
• Energy consumption over 24 hours (E24h):	6,50
• Annual energy consumption in kWh:	2373
• Cooling gas:	R404a




ENERG


енергия · ενεργεια

Y IJA

IE IA




TA21/1ME




ENERGIA · ЕНЕРГИЯ · ΕΝΕΡΓΕΙΑ
ENERGIJA · ENERGY · ENERGIE
ENERGI

2373


kWh/annum



372 L



- L



4
30°C-55%

2015/1094-I

Energy label (UE 2015/1094)

Cold Line S.r.l. • Via E. Mattei, 38 • 35038 Torreglia • Padova - Italy • www.coldline.it • info@coldline.it

In order to constantly offer the best possible products, we reserve the right to make changes on technical specifications without incurring any obligation for equipment previously or subsequently sold.

